

## Cajsa Ekstav and Bosse Larsson

Cajsa and Bosse were in the San Francisco Bay Area the first week of October!

These two Rikspelmenn from Uppland gave a house concert in Berkeley on October 3rd. Nyckelharpa lessons by Cajsa and fiddle lessons by Bosse were during the day at Anita Siegel's house on Saturday the 6th. That evening, at the 1st Saturday dance in Palo Alto, Bosse and Cajsa gave a mini concert and played for dancing.

Thank you Jill Myers (and helpers: Sarah Kirton, Linda Persson, Anita Siegel) for organizing this event!

Please see photos of the house concert on page 3.

Below are the tunes taught to the fiddlers by Bosse Larsson :

1. Vendelpolska av Viksta-Lasse, Bond
2. Låt mot trötthet e. Hjort Anders, Bingsjö polska
3. Polska e. Slunk Jerk e. Pekkös Gustav, Bingsjö
4. Bingsjö skänklåt
5. Mårtamåsgubbens, "Brödkakan", e. Hjort Anders
6. Polska e. Lump Janne, Uppland, Bond
7. Kyrkmarsch e. Olav Jansson fr. Österväle
8. Hultkläppens Vals

Here are the nyckelharpa tunes taught by Cajsa Ekstav (Sorry, this list is in need some clarification.):

Äppelbo Gånglåt  
Snoa  
Bond Polska efter BåtsmanDäck  
Schottis - Eric Sahlström e. Styfberg  
Brudmarsch  
Devils Polska from Flel

## Scandinavian Dance Party

Shingle Springs

Saturday December 1 2007

Live Music with Tim Rued.  
Couples & Singles Welcome.  
Easy dances reviewed 7 - 8 PM  
Dance Party 8 to 11 PM

Wolterbeek Dance Barn, 3100 Ponderosa Road, Shingle Springs.

From Sacramento, take Highway 50 to Ponderosa Road exit. Go left (North) on Ponderosa, and in about 2 miles look for a sign into Wolterbeek's parking lot.

It's on your left just before the Sogno vineyard.

Carpooling from Sacramento can be arranged.

Donation: \$5

Sponsored by El Dorado Scandinavian Dancers

Contact: John Hingtgen, (916)651-9106,

<<http://www.folkdance.com/scandi/>>



### Newsletter Inside:

Board Members, About the NCS	2
Photos	3
Folkmusic from the mining Region of Dalarna, by Fred Bialy	4
Go to Hell!, by Wes Ludeman	5
Scandiadans	6
2nd Saturday Party	6
South Bay Dance	7
Sacramento Class	7
American Scandinavian Music Internet Sites	8
Annual Reminder	8
Calendar	9

## About the Northern California Spelmanslag

### The Board and Board Meetings

The Northern California Spelmanslag has a board of 12 members. Current directors are:

Jeanne Sawyer, President,  
jsawyer@SawyerPartnership.com  
Betsy McKone, Vice President,  
recbetsy@aol.com  
Jim Little, Treasurer,  
james.little@sri.com  
Frank Tripi, Secretary,  
fjtripi@juno.com  
Fred Bialy, Director ,  
bialy10@attbi.com  
Zena Corcoran, Director  
zmcocoran@aol.com  
Marie Kay Hansen, Director  
brizal@comcast.net  
Sarah Kirton, Director,  
sarah.kirton@sbcglobal.net  
Linda Persson, Director,  
PerssonLK@aol.com  
Henry Sawyer, Director,  
hsawyer@SawyerPartnership.com  
Tom Sears, Director,  
tomsears.pols@gmail.com  
Jane Tripi, Director,  
fjtripi@juno.com

If you would like to offer input regarding Spelmanslag activities or would like to become actively involved, please contact one of the directors with your ideas and suggestions. You are welcome to attend board meetings. If you are interested in being a board member, please let one of our current directors know. Normally, elections for the board take place on the first Saturday of October. Contact Jeanne Sawyer for the time and place of board meetings.

The Northern California Spelmanslag is a non-profit public benefit corporation which aims to promote Scandinavian music, dance and culture through special workshops, regular meetings, concerts and performances. The organization consists of a central organization and three member groups: Nordahl Grieg Leikarring, Nordic Footnotes, and Scandiadans. In addition to dance groups, the Spelmanslag contains many members who are active in playing Scandinavian music, loosely organized in playing groups by locality.

NCS organizes and presents festivals which include extensive instruction in both folk dance and folk music, concerts with dance demonstrations, and dance parties. We also play host to visiting musicians, and organize musicians' workshops, concerts, and/or dances in conjunction with their visits.

We hold regular meetings for musicians in three locations where Scandinavian folk music is taught and shared, and we have been successful in introducing newcomers to Scandinavian music and dance.

The Spelmanslag sponsors regular Scandinavian dance classes via Scandiadans, Nordahl Grieg Leikarring, and Nordic Footnotes, and has provided these and other groups with non-profit status and insurance coverage.

*(Continued on page 5)*

#### **The Northern California Spelmanslag News is published quarterly.**

The NCS News is also online at:  
<members.aol.com/jglittle/ncs.html>

Deadline for next issue: January 20, 2008

Send articles, and calendar information, and comments to:

Marie Kay Hansen, editor NCS News,  
(209)836-5494, <brizal@comcast.net>,  
or

15564 Rancho Ramon Dr., TRACY, CA, 95304-9754

To update Web Page Calendar between issues,  
send information to: Jim Little, (650)323-2256  
560 Kingsley Ave, Palo Alto CA 94301-3224  
<james.little@sri.com>

Address all other correspondence to:

Northern California Spelmanslag  
560 Kingsley Ave, PALO ALTO CA 94301-3224

Cajsa and Bosse  
Photos by Nigel Warren  
Story, page 1.



## Folkmusic from the Mining Region of Dalarna

by Fred Bialy

(This article appeared in the NCS newsletter back in 1995 Vol 5, # 3.)

It is apparent upon perusing the contents of the new recording Låtar från Dalabergslagen that much of the repertoire is of younger origin than what we have come to associate with Dalarna. We find many waltzes, hambopolskas, mazurkas, and polketts, but no vallåtar or långdanser. Yes, there are polskor, but it is noteworthy that most of the older tunes from southern Dalarna in today's repertoire have not been maintained in an unbroken tradition. By the early 20<sup>th</sup> century, when researchers began to tour through Sweden in an effort to document and preserve folk culture, these older tunes had pretty much gone out of fashion in southern Dalarna. Clearly, music traditions in this region developed on a different path than the rest of Dalarna. This difference can be attributed to two factors unique to southern Dalarna: the mining industry and the presence of military regiments.

The mining industry in this region produced a strong urban influence on peasant life. The music and dances introduced at parties hosted by the local iron barons quickly spread to the village dance hall. And what was new soon became favored over the old. This cultural spread was facilitated by musicians connected with area military regiments. It was the regimental musicians who played in the ballrooms of the iron barons. These musicians had close contact with village musicians (in fact they were often one and the same person) and they enjoyed a free interchange of music. New tunes spread quickly throughout the region. As a result, the folk musicians of southern Dalarna had a fairly uniform repertoire; one does not find the degree of local variation over short distances that exists in other parts of Dalarna.

Through contact with regimental musicians, who usually had had some education, many village musicians learned to notate music and began to write down their tunes in notebooks. The oldest surviving tune book from this region was begun in 1803. Through the study of these old notebooks much of the older repertoire, largely polskor, from southern Dalarna has been

revived.

The polskor found in these tune books are of two main types. The sextondelspolska (16<sup>th</sup> note polska) was represented mainly by the polonaise. These tunes first arrived in Sweden from Europe in the early 1700s. Rhythmically these tunes were very even with every beat getting equal weight. A rhythmically more asymmetric polska was also notated in these books and is felt to have developed at the same time as the sextondelspolska. Known as the åttondelspolska (8<sup>th</sup> note polska), these tunes give a stronger emphasis to the first and third beats.

These tune books are a valuable record of changes in musical fashion and reveal when new tune and dance types were introduced into peasant society. Besides the polska, the menuette, kadrilj, and engelska were also fairly common during the 1700s and early 1800s. By the mid-1800s these dances and their tunes were falling out of favor. The polska was being replaced by the hambopolska, which has a hambo-like character with a hint of the older polska retained. The waltz was already becoming popular in the 1820s. Then over a period of 20 years, the polka (1840), the mazurka (1850), and the schottis (1860) arrived in close succession.

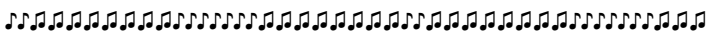
Besides dance music, the books contain a rich repertoire of ceremonial tunes. Many served special functions at weddings and parties: brudmarscher were played as the bridal pair or wedding party walked from one point to another. A skänklåt signaled that it was time to give presents to the newlyweds or that the musicians expected to be paid. A steklåt was played as food was brought out to begin dinner.

The folk music miljö in southern Dalarna is characterized by the popularity of other instruments besides fiddle. The clarinet was particularly popular among regimental musicians of the mid 1800s. It was quite common for a clarinetist to play with one or two fiddlers at a village party. By the late 19<sup>th</sup> century the cittra and accordion became increasingly prevalent. The cittra was initially played mainly by women as accompaniment to singing. Gradually it was used more and more to provide chord backup for dance music. The cittra and accordion contributed to the decline of interest in older polska tunes, especially those in minor keys, since these instruments were best suited for tunes in

*(Continued on page 5)*

(Continued from page 4) **Mining Region of Dalarna** major keys which melodically allow regular chord changes.

One unusual folk instrument that developed in southern Dalarna is the Näverlapp. This simple instrument is made from a thin rectangular piece of birch bark slightly more than an inch wide by 1 ½ inches long. One end is rounded. It looks like a wide clarinet reed and is played by putting the square end between the lips and teeth of the lower jaw and setting it vibrating by blowing. Accomplished players were reputed to have a two octave range. It sounds much like a clarinet. The instrument's most famous player was Ström-solles Karl Andersson from Hedemora. He died in 1940, but not before teaching the playing technique to others so that this musical tradition still remains alive today.



(Continued from page 2) **About the Northern California Spelmanslag**

The Spelmanslag works with other Scandinavian organizations in promoting Scandinavian culture. We provide performances of Scandinavian folk music and dance for other Scandinavian organizations and for the general public. We maintain contacts with numerous Scandinavian organizations and agencies promote communication and inform them of our activities. We also seek to promote communication and cooperation among various groups across the United States who are involved in organizing events promoting Scandinavian folk music and dance. In the past, we have cooperated with several groups around the country in organizing tours for Scandinavian guest instructors.

### Organizational Affiliations

The Northern California Spelmanslag is a club under the Folk Dance Federation of California. The Spelmanslag obtains its liability insurance through the Folk Dance Federation. The Nordahl Grieg Leikkarring og Spelemanslag is a member group of the Northern California Spelmanslag. Nordic Footnotes is a member group of the Northern California Spelmanslag. Scandiadans is a member group of the Northern California Spelmanslag.

The Northern California Spelmanslag also cooperates with other Scandinavian organizations such as the Swedish and Norwegian consulates, the local Sons of Norway and VASA lodges, and the American Scandinavian Foundation. Maintaining communication and mutual support between the Spelmanslag and various other Scandinavian organizations in Northern California is one of the goals of the Spelmanslag.

## Go to Hell!

by Wes Ludeman

How does one get to Hell, you may ask? Practice is one way. Or if you're in Scandinavia you can go by train, bus or car. Hell is located in Norway, a little to the east of Trondheim. No, this isn't a Swedish joke. Hell really exists in Norway. It is a small community of about 350 souls, if it is proper to speak of souls inhabiting Hell. It is an attraction for English-speaking tourists, inasmuch as the English word "Hell" means the Underworld, also known as Hades, Gehenna, Sheol, etc. Helvete in Swedish. The name of the town comes from the Old Norse word hellir, meaning klippgrotta, or rock cavern. The Norwegian word hell also means "luck," so don't worry about being trapped in Hell. There is an escape. Go to the rail station and look for the sign with an arrow pointing the way to "GODS EXPEDITION!"

What is there to do in Hell? Try a "Honeymoon in Hell" at one of the local hotels. And if your honeymoon is really hell, and you end up singing "The Blues in the night," stay on for the Hell Blues Festival. For 2007, it was held the last week in June. The sizeable Hell Blues Choir is often a standout attraction at the festival. Check the choir out at [www.hellblues.com](http://www.hellblues.com).

Where did the dead go in pre-Christian Viking times? It depended on whether you died in battle, or in your bed. Let's deal with the good times first.

The Valkyries (Choosers of the Slain) were warrior maidens of the god Odin. They were mostly daughters of the Aesir gods and goddesses who lived in the realm Asgard; some were Odin's daughters. They had names like Screamer, Shrieker, Storm Raiser, Axe Time, Spear Bearer, Shield Bearer and Mist. During a battle they flew down to earth, or Midgard, in full armor, with golden hair flying from underneath their winged helmets. When a hero fell, either dead or mortally wounded, a Valkyrie would sweep him up and carry him on horseback to Odin's hall, called Valhalla, the Hall of Dead Heroes. There the Valkyries changed into white robes and poured mead for the miraculously healed heroes. For goblets they used the skulls of their slain enemies. The never-ending mead was supplied by the enchanted goat Heidrun. Abundant food came

*(Continued on page 6)*

(Continued from page 5) **Go to Hell!**

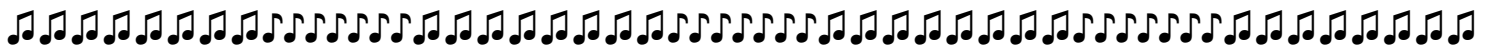
from the magical boar Särimner. After being eaten by the heroes, he would rise up the next morning, good to go again. I've not been able to find out Särimner's opinion of Valhalla. Each day the warriors would put on armor and fight to their heart's content, and each evening they were magically healed and resurrected for another go at the mead, Särimner, and presumably, the Valkyries. Odin's goal was to build up a vast army of the world's best warriors to fight beside the Aesir gods at Ragnarok, the Day of Doom.

Those unfortunate enough to die of natural causes had cause to regret. They went to Nifelheim, the World of Fog and cold, ruled over by the Goddess Hel. Hel was from a dysfunctional family, the daughter of the Trickster God Loki and his wife, the human-hating giantess Angerboda (Bringer of Distress). Since Hel's siblings were the Fenris wolf and the Midgard serpent, she must have had a harrowing childhood. The Gods looked at her with loathing, and Odin cast her down into Nifelheim to look after the wicked and miserable souls who had died of hanging, starvation, disease or old age. Hel's table was called Hunger, her knife, Starvation, her bed Sickness, and the hangings about it Misfortune. During times of famine and plague, Hel roamed the earth on her three-legged

white horse, raking up survivors and sweeping them down with her broom to Niflheim. After her arrival, it was also called Helheim, or Hel's realm. It is said that her name was so frightening that the Christians appropriated it for the name of their underworld, although I have seen at least two other origins suggested for the name.

The goddess Hel has been described as, at best, quaintly unattractive, and, at worst, monstrously repugnant. She was the most evil-tempered of all the Aesir, and the other gods were in fear of her. Physically she was described as relatively normal from the waist up, but below the waist her flesh was decayed and rotting. Other descriptions of Hel had the split being longitudinal, with one side pale white, and the other blackened by decay.

With Hel's arrival, Nifelheim became even more of a hell. Hel took to her new career with gusto, and made Nifelheim even more unbearable, not by new tortures, but by enforcing a strict policy of mind-numbing nothingness. Souls that came to her were kept painfully hungry and sat in icy darkness with absolutely nothing to do, making eternity seem even more of an eternity. The only thing to look at in Helheim was Hel herself, and looking in her direction was a gut-wrenching mistake.



## Scandiadans

Thursdays in Oakland

Beginners teaching and open dancing. Frank and Jane are very encouraging and helpful teachers! Come regularly! Each week, one new dance taught and old ones reviewed. The cost is \$3.00.

Thursdays, 7 - 10 pm.

Oakland Nature Friends Center,  
3115 Butters Dr., Oakland, CA.....  
Take Hwy 13 to Joaquin Miller Rd, go east (up the hill) ~ 1/2 mile, second right onto Butters Dr., go another 1/2 mile. On the right, look for post with 3115 on it (also "Scandiadans" sign). Take driveway down to a large parking area.

Contact: [Jane Tripi](mailto:Jane_Tripi) or [Frank Tripi](mailto:Frank_Tripi) at (510)654 -3636, <fjtripi@juno.com>.

## Scandia 2nd Saturday

### Monthly Dance

Nature Friends in Oakland

Next few dances: November 10th, December 8th, and January 12th.

Dance teaching: 7:30 - 8:30 pm

Dancing, 8:30 -11:00 pm

Musicians encouraged to play in the allspell!

The dances occur every month on the second Saturday. Cost: \$7.00.

Directions see Scandiadans above.

Contact: [Jane](mailto:Jane_Tripi) or [Frank Tripi](mailto:Frank_Tripi) at (510)654-3636, <fjtripi@juno.com>.

## South Bay Monthly Dance

### “1st Saturday Dance” and Teaching Session

Next few dances: November 3rd, December 1st, and January 5th.

The teaching session is the hour before the dance party, from 7:30-8:30. Everyone is welcome! Come learn or review dances for yourself and help others. Let Jeanne know if you have a particular dance you'd like taught/reviewed.

It's also an opportunity for teachers, experienced, and otherwise! Teach a favorite dance that doesn't get done often enough, test out how you want to teach a dance you haven't taught before, or venture into the

teaching waters for the first time.

All musicians are welcome to play in the allspel or have your own set. Talk to Jeanne to get a time slot.

Our regular place is in Palo Alto at the First United Methodist Church, 625 Hamilton Avenue.

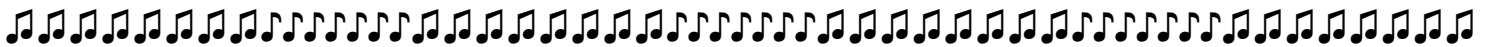
For more information:

Jeanne or Henry, (408)929-5602,  
<[jsawyer@SawyerPartnership.com](mailto:jsawyer@SawyerPartnership.com)>

Linda or Jim (650)323-2256,  
<[james.little@sri.com](mailto:james.little@sri.com)>

Sarah, (650)968-3126  
<[sarah.kirton@sbcglobal.net](mailto:sarah.kirton@sbcglobal.net)>

Sponsored by: Nordic Footnotes, and Northern California Spelmanslag, non-profit organizations.



## Scandinavian Dance Class

### Sacramento Beginning & Intermediate

Starts Monday, October 29.

Scandinavian Folk Dancing is taught in the Sacramento area in short courses of five to six sessions each, with breaks for holidays. The class covers basic and some intermediate level dances, as well as good dance technique. Advanced dances may be requested during the last half hour, but generally the class will emphasize more fundamental skills. No previous experience is required. Singles & couples are welcome. Partners are rotated frequently to speed the learning process and give everyone a chance to participate.

The next session will run Monday evenings from October 29 through December 10, 2007, but no class will meet on November 12 (Veteran's Day holiday).

Attire: Bring smooth soled shoes; low heels are best. For men, a broken-in pair of dress shoes with a leather sole works well. For women, a sturdy leather soled shoe with a low heel will work. Dress for comfort. Water is available in the classroom, but bring a cup or bottle.

Class Schedule:

Beginner dances and fundamentals: 7 - 8pm

Intermediate dances & review of beginner dances:  
8-9pm

Request dancing: 9-9:30pm

Class is held under the auspices of the Arcade Creek Recreation & Park District, 916-482-8377, Brandi Marx, <[bmarx@arcadecreekrecreation.com](mailto:bmarx@arcadecreekrecreation.com)>. Cost is \$30.00 for six classes. On-line registration through the District at:

<<http://www.arcadecreekrecreation.com/>>

Location: Class is held indoors at Hamilton Street Park Community Center: 4855 Hamilton Street, Sacramento, CA 95841. (916) 482-8377

Contact: Marida (916) 358-2807

<<http://www.folkdance.com/scandi/>>.



## American Scandinavian Music and Dance Internet Sites

The Northern California Spelmanslag:  
<<http://members.aol.com/jglittle/ncs.html>>

Scandia Camp Mendocino:  
<[www.ScandiaCampMendocino.org](http://www.ScandiaCampMendocino.org)>

Sacramento, California Area  
<<http://www.folkdance.com/scandi/>>

Scandinavian Dance & Music in and around  
Los Angeles:  
<<http://www.dancin-fool.com/scandia.html>>

Norske Runddansere: Scandinavian dancing in  
Portland, Oregon:  
<<http://www.norskerunddansere.org/>>

Blue Rose, Karen Myers's Scandinavian WebSite:  
<[www.blurose.KarenLMyers.org](http://www.blurose.KarenLMyers.org)>

The Hardangar Fiddle Association of America:  
<[www.hfaa.org/](http://www.hfaa.org/)>

The American Nyckelharpa Association:  
<[www.nyckelharpa.org](http://www.nyckelharpa.org)>

The Skandia Folkdance Society (Seattle):  
<[www.skandia-folkdance.org/](http://www.skandia-folkdance.org/)>

Scandia D.C.(Washington D.C.):  
<[www.scandiadc.org](http://www.scandiadc.org)>

Speledans: Boston's Scandinavian Dance Group:  
<<http://ecf-guest.mit.edu/~jc/Speledans.html>>

Scandinavian listserv, "Scand Digest":  
<<http://groups.yahoo.com/group/scand/>>

Roo Lester, Scandia Camp Mendocino, Scandinavian  
Turning Dances,  
<<http://members.aol.com/dancingroo>>

Norsk, Ltd., Recorded music for both dancing and lis-  
tening. <<http://www.csd.net/~sodaling/>>

## If you contribute annually, consider this your annual reminder.

It's That Time of Year Again...when thoughts turn to gifts and taxes...and to memberships in various organizations. While you're at it, think about what you'd like to see the organization do for you, and what you might do for us. Sometimes it takes awhile to organize events, but your suggestions are all considered, and often acted upon.

The Northern California Spelmanslag (NCS) is a non-profit public benefit corporation which aims to promote Scandinavian music, dance and culture through special work-shops, regular meetings, concerts, and performances. We also publish the Northern California Spelmanslag News.

☞ Identify topics you would like covered in the newsletter. What do you look for and enjoy in the News? What should be there that isn't now? Are you interested in writing for the News?..Please send us a note!

☞ Consider a tax-deductible contribution to the NCS. Although not required to be on our mailing list, we'd appreciate at least enough of a contribution to cover the cost of printing and mailing the News. We still have not reached our goal of paying for the newsletter by donations; we'd like to keep it free to all who'd like to receive one. If you wish to contribute more, it will help us sponsor workshops, concerts, and other events (including airfare for our music and dance teachers and traveling from Scandinavia). Use or copy the form on the last page.

☞ Address, Phone Number, and email corrections. Help us keep up to date! Use or copy the form on the last page.

Austin Scandinavian Dancing.  
<[www.austinscandi.org](http://www.austinscandi.org)>

Twin Cities Nyckelharpalag  
<<http://nyckelharpalag.googlepages.com>>



## Calendar

## Regular Events — Northern California

Mondays	Weekly	Scandinavian Dance Class. Six week sessions. 7 - 9:30pm. Hamilton Street Park Community Center, Hamilton Street, Sacramento, CA 95841. Contact <u>Marida Martin</u> : (916)358-2807, or : < <a href="http://www.folkdance.com/scandi/">http://www.folkdance.com/scandi/</a> >.
Tuesdays	Weekly	Weekly Scandinavian Session for Fiddlers and Nyckleharppers. 8 - 10:30pm at home of Fred Bialy and Toby Blomé, 1925 Hudson Street, El Cerrito. Now on Tuesdays, most of the time. Contact ahead of time for updated schedule of gatherings or to be put on Fred's list . Contact: <u>Fred</u> or <u>Toby</u> , (510)215- 5974, < <a href="mailto:bialy10@comcast.net">bialy10@comcast.net</a> >.
Wednesday	Weekly	Nordahl Grieg Leikarring Performance Group. Masonic Hall, 980 Church St., Mountain View, 7:30 - 9:30 p.m. Contact: <u>Anne Huberman</u> or <u>Greg Goodhue</u> : (408)259-9959, < <a href="mailto:goodhue@hotmail.com">goodhue@hotmail.com</a> >.
Thursdays	Weekly	Scandiadans. Teaching and open dancing, 7 - 10 pm, at Oakland Nature Friends, 3115 Butters Dr., Oakland, CA. Hwy 13 to Joaquin Miller Rd, east (up the hill), second right onto Butters Dr., go about 1/2 mile. On the right, look for post with 3115 on it (also "Scandiadans" sign). Take driveway down to a large parking area. Contact: <u>Jane Tripi</u> or <u>Frank Tripi</u> at (510)654-3636, < <a href="mailto:fjtripi@juno.com">fjtripi@juno.com</a> >.
Fridays	Weekly	Scandinavian Fiddle Class. 7:30 - 9:30 pm, often at Anita Siegel's, but location varies. Ask to be on class email list. Contact: <u>Jeanne Sawyer</u> , (408)929-5602, < <a href="mailto:jsawyer@SawyerPartnership.com">jsawyer@SawyerPartnership.com</a> >.
1st, 3rd, 5th Mondays		Scandinavian Folk Dance Class. Santa Cruz, 7:30 pm, Viking Hall, 240 Plymouth (at Button), Santa Cruz. Instruction in Norwegian, Swedish, Danish, and Finnish folk dance by Ellen Moilanen. \$5/session. Everyone welcome. Contact: <u>Ellen</u> , (831)336 9972.
1st Fridays	Monthly	Cultural Evenings in Santa Cruz. Usually at Viking Hall, Plymouth, at Button St., Santa Cruz. Contact: <u>Michael Block</u> at (831)336-9972, or: < <a href="mailto:sigdalkid@pcumail.com">sigdalkid@pcumail.com</a> >.
1st Saturdays	Monthly	Nordic Footnotes 1st Saturday Scandinavian Dance Party, 7:30 p.m. -12:00. The dance includes a teaching session just before the dance party, from 7:30-8:30. First United Methodist Church, 625 Hamilton Ave, Palo Alto. From Hamilton Ave., hall is in bldg. to right on 2nd floor. Parking behind church, on street, or in garage on Webster. Contact: <u>Jeanne</u> or <u>Henry</u> , (408)929-5602, < <a href="mailto:jsawyer@SawyerPartnership.com">jsawyer@SawyerPartnership.com</a> >; <u>Sarah Kirton</u> (650)968-3126, < <a href="mailto:sarah.kirton@sbcglobal.net">sarah.kirton@sbcglobal.net</a> >; <u>Jim Little</u> or <u>Linda Persson</u> , (650)323-2256, < <a href="mailto:james.little@sri.com">james.little@sri.com</a> >.
1st Sundays	Monthly	Nordahl Grieg Spelemanslag, 3 to 5pm, 1780 Begen Ave., Mountain View, CA 94040. Interested attendees should call <u>Bill Likens</u> at (650)969-2080 to confirm meeting dates.

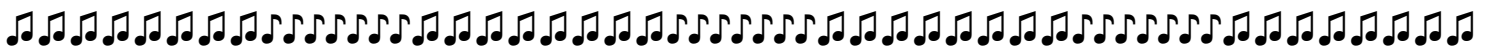
(Continued on page 10)

*(Continued from page 9)***Regular Events — Northern California**

- 2nd Saturdays Monthly Open Sessions for Fiddlers, at the home of Fred Bialy ~ 2 - 5 pm. This is a practice session for the Second Saturday Scandinavian Dance. We meet at the home of Fred Bialy, 1925 Hudson Street, El Cerrito. Contact: Fred: (510)215 - 5974, <bialy10@comcast.net>. Call a few days ahead to confirm date, time and place.
- 2nd Saturdays Monthly Scandia 2nd Saturday Monthly Dance. Nature Friends in Oakland. Cost: \$7. Musicians encouraged to play. Dance teaching: 7:30 - 8:30 pm, Dancing, 8:30 - 11 pm. Directions see Scandiadans above. Contact: Jane or Frank Tripi at (510)654-3636, <fjtripi@juno.com>.
- 2nd Sundays Monthly Traveling Dance Class. Norwegian dance class meets 2 - 5 pm. Usually at Bjørnson Hall, 2258 MacArthur Blvd. in Oakland. Everyone welcome to attend. Contact: Gudrun Tollefson at (510)638-6454, or Gerd Syrstad at (650)363-2743.
- 2nd Sundays Monthly Barneleikkaring. (Children's Norwegian Dance) classes, 1:30 - 3:30 pm, at Nordahl Hall, 580 W. Parr Ave., Los Gatos. Contact: Ginny Hansen (408)745-1595. Both location and day may change, so call ahead!
- 4th Sundays Monthly The El Dorado Scandinavian Dancers. Nov. and Dec. dances cancelled. Meeting at YLI in Sacramento at 27th & N. The Scandinavian dancing occurs between 3:30 - 5:30pm. The All-Request Party is from 5:30-6:30pm. Contact: Yvonne or Andre (916)632-8807, <yacouvillion@sbcglobal.net>, <http://www.folkdance.com/scandi/>.

## Calendar, Special Events — Northern California

- November 2 - 4, 2007 **Camp Norge Folkedans Stevne.** Camp Norge is located near Alta, California. Sponsored by the Nordahl Grieg Leikarring og Spelemannslag. Contact: Mikkel Thompson, <Mikkel4dans@yahoo.com>. Zena Corcoran (650) 355-3752. Anne Huberman & Greg Goodhue (408) 259-9959.
- December 1, 2006 **Scandinavian Dance Party**, Shingle Springs. 7—11pm. Live Music with Tim Rued. Contact: John Hingtgen, (916)651-9106, <http://www.folkdance.com/scandi/>
- June 14-21, 2008 (Sat. – Sat). **Scandia Camp Mendocino.**  
Contact: Scandia Camp Mendocino, 1320 Harleyford Road, Woodridge, IL 60517, <Roo@ScandiaCamp.org> <www.ScandiaCampMendocino.org>.



## NCS Annual Report Published

The Northern California Spelmanslag's Annual Report, which was, in the past, published in this newsletter, will be posted on the Spelmanslag webpage at: <members.aol.com/gjlittle/ncs/html>.

This report includes the organization's statement of

purpose, a description of our member groups, a list of officers and how to contact them, the year's financial statement, and a list of the year's activities. The Northern California Spelmanslag was founded in 1990. This NCS Newsletter goes nationwide; the Spelmanslag itself serves primarily those in the San Francisco Bay Area and northern California who are interested in Scandinavian Music and Dance. This year's report will appear in Nov. or Dec.

## Calendar, Special Events — United States

- November. 22-25, 2007, **Southern California Skandia Festival**, Cedar Glen Camp, Julian, California. Yvonne Hansen and Torbjörn Sjöberg and musicians Bengt Jonsson, Lars Fredriksson, and Kesti Jobs Roos, all from Sweden. Julane Lund, from the mid-western United States, will play Hardanger fiddle for Norwegian dancing. The workshop cost are \$285 for dancers and \$250 musicians Contact: Ted Martin, (714)893-8888, <tedmart@juno.com>, or Darlene Martin (562)496-3405 <darmar2@earthlink.net>, <www.hfaa.org>.
- January 18 - 20, 2008, **Vinterdansen & Fiddle Workshops**, Cedar Valley Grange, Lynnwood, Washington. Olav Luxengård Mjelva, fiddle and Hardanger fiddle player from Røros, Norway gives instruction and plays for dancing. Vinterdansen takes place on Friday. Olav gives fiddle workshops on Saturday and Hardanger workshops on Sunday. Contact: <www.skandia-folkdance.org>.
- January 25 - 27, 2008. **12th Annual Scandinavian Ski-Dance Weekend**, Hulbert Outdoor Center, Fairlee, Vermont. Instruction sessions in Hardanger fiddle and dance. Dance teacher is Karin Brennesvik from Telemark, Norway. The fiddler is Kenneth de Gala from Norway. Toby Weinberg and Loretta Kelley play Hardanger fiddle and Stefhan Olsson (Stefhan Ohlström?) plays Swedish fiddle for dancing. Price: \$220. Contact Tom Kringstad, 83 Colonial Ave, Cranston RI, 02910, (401) 270-5431, <tom.kringstad@nordic-home.com>, or Toby Weinberg, (315) 484-4353, <tobyweinberg@hotmail.com>.
- March 28 - 30, 2008 **Boulder Spring Scandinavian Dance Workshop**. Dance Teachers: Stig and Helén Eriksson. Fiddlers: Isabel Svärdmalm and another, yet to be announced. Contact: Sheila P. Morris, <spmorris@.....>
- April 9 – 16, 2008 (Sunday to Sunday), **Norwegian Dance and Dance Teacher Training course**. At Camp Wesley Woods, on Lake Geneva in southern Wisconsin. Johan Einar Bjerkem and Torunn Hjernes Bjerkem from Steinkjer, Norway. This is an intensive course in fundamental techniques for Norwegian traditional dance, pedagogy, and dance leadership. The course will be taught by instructors certified by Noregs Ungdomslag. A minimum deposit of \$300 is due by January 4, 2008. Contact: Ginny Lee and Toby Weinberg, 720 Fellows Ave Syracuse NY 13210, <tobyweinberg@hotmail.com>, (315) 484 4353.
- 18–21 April 2008 **Springdans Northwest 2008**. Dance instructors Tørill Jørgensen and Ole Jørgen, and fiddle instructors Magne Haugom and Ole Erik Feragen, from Røros, Norway. Contact: <<http://www.skandia-folkdance.org>>.

## Calendar, Special Events — Scandinavia

There are many events listed at: On the website of the Northern California Spelmanslag: <[members.aol.com/jglittle/ncs.html](http://members.aol.com/jglittle/ncs.html)>. Have a look, or ask one of us with a computer to print it out for you.

Northern California Spelmanslag Mailing List Form

Name \_\_\_\_\_ Home phone \_\_\_\_\_

Address \_\_\_\_\_ Other phone \_\_\_\_\_

\_\_\_\_\_ email \_\_\_\_\_

\_\_\_\_\_ Musician \_\_\_ Dancer \_\_\_ Audience \_\_\_

May we publish your name, address, and phone on a Spelmanslag roster? \_\_\_\_\_

Do you want to receive information?: \_\_\_ music workshops: Swedish \_\_\_ Norwegian \_\_\_ Danish \_\_\_ Finnish \_\_\_

\_\_\_ dance workshops: Swedish \_\_\_ Norwegian \_\_\_ Danish \_\_\_ Finnish \_\_\_

\_\_\_ dance parties; Swedish \_\_\_ Norwegian \_\_\_ Danish \_\_\_ Finnish \_\_\_

\_\_\_ concerts and performances: Swedish \_\_\_ Norwegian \_\_\_ Danish \_\_\_ Finnish \_\_\_

How are you able to help? Are you willing to bring potluck snacks and refreshments to Spelmanslag events? Are you willing to house out-of-town participants for Spelmanslag festivals, or entertain overseas visitors before or after a festival or camp?

Are you willing to volunteer for various tasks to help organize or run Spelmanslag events (making punch, set-up, clean-up, collecting admission, loaning/operating sound equipment, designing fliers, photocopying, playing for dances)?

Are you willing to write an article, take photos, or draw illustrations for our newsletter?

Donation: \_\_\_\_\_ \$15.00 \_\_\_ \$25.00 \_\_\_ \$50.00 \_\_\_ other

Send to: Northern California Spelmanslag, 560 Kingsley Ave, PALO ALTO CA 94301-3224

Donation is not necessary for membership.

Your tax-deductible donation helps the Spelmanslag bring over instructors from Scandinavia, and covers the costs of publishing and mailing fliers and newsletters. Any amount you can contribute is greatly appreciated!

See our web page at: <<http://members.aol.com/jglittle/ncs.html>>

Northern California Spelmanslag  
A California Non-Profit Public Benefit Corporation,  
560 Kingsley Ave,  
PALO ALTO CA 94301-3224



FIRST CLASS MAIL

